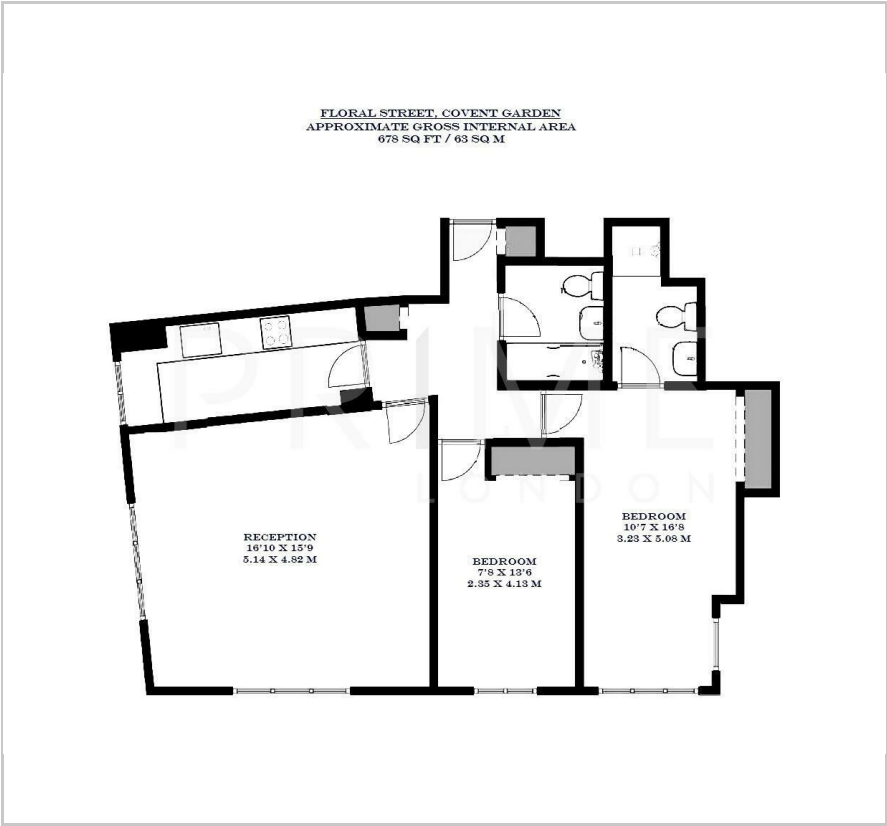




30 Floral Street
Covent Garden, WC2E 9DP
£923 Per Week

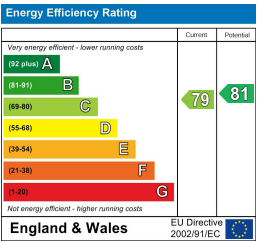
Floor Plan



Area Map



Energy Efficiency Graph



Viewing

By appointment. Contact us on 0207 052 1075 if you wish to arrange a viewing appointment for this property, or require further information.

- Two bedroom apartment
- 678 sq ft (63 sqm)
- Separate fully fitted kitchen
- Wooden flooring throughout
- Short walk to Covent Garden
- Daytime onsite porter station



This refined two bedroom apartment, located in the heart of Covent Garden, is available for lease through Prime London.

Offering 678 sq ft (63 sqm) of living space, the property features a bright reception space that leads to a sleek, separate modern kitchen complete with integrated appliances. Both double bedrooms provide excellent built in storage, and the property further comprises two contemporary bathrooms.

Residents of this distinguished development also benefit from an on site porter.

Perfectly nestled on the highly desirable Floral Street, the apartment is moments from Covent Garden Piazza and just a short walk from Covent Garden Underground Station, offering convenient access to the Piccadilly Line and the West End.



These particulars, whilst believed to be accurate are set out as a general outline only for guidance and do not constitute any part of an offer or contract. Intending purchasers should not rely on them as statements of representation of fact, but must satisfy themselves by inspection or otherwise as to their accuracy. No person in this firms employment has the authority to make or give any representation or warranty in respect of the property.